



PJ TECHNOLOGIES PROJECTS COMPANY PROFILE

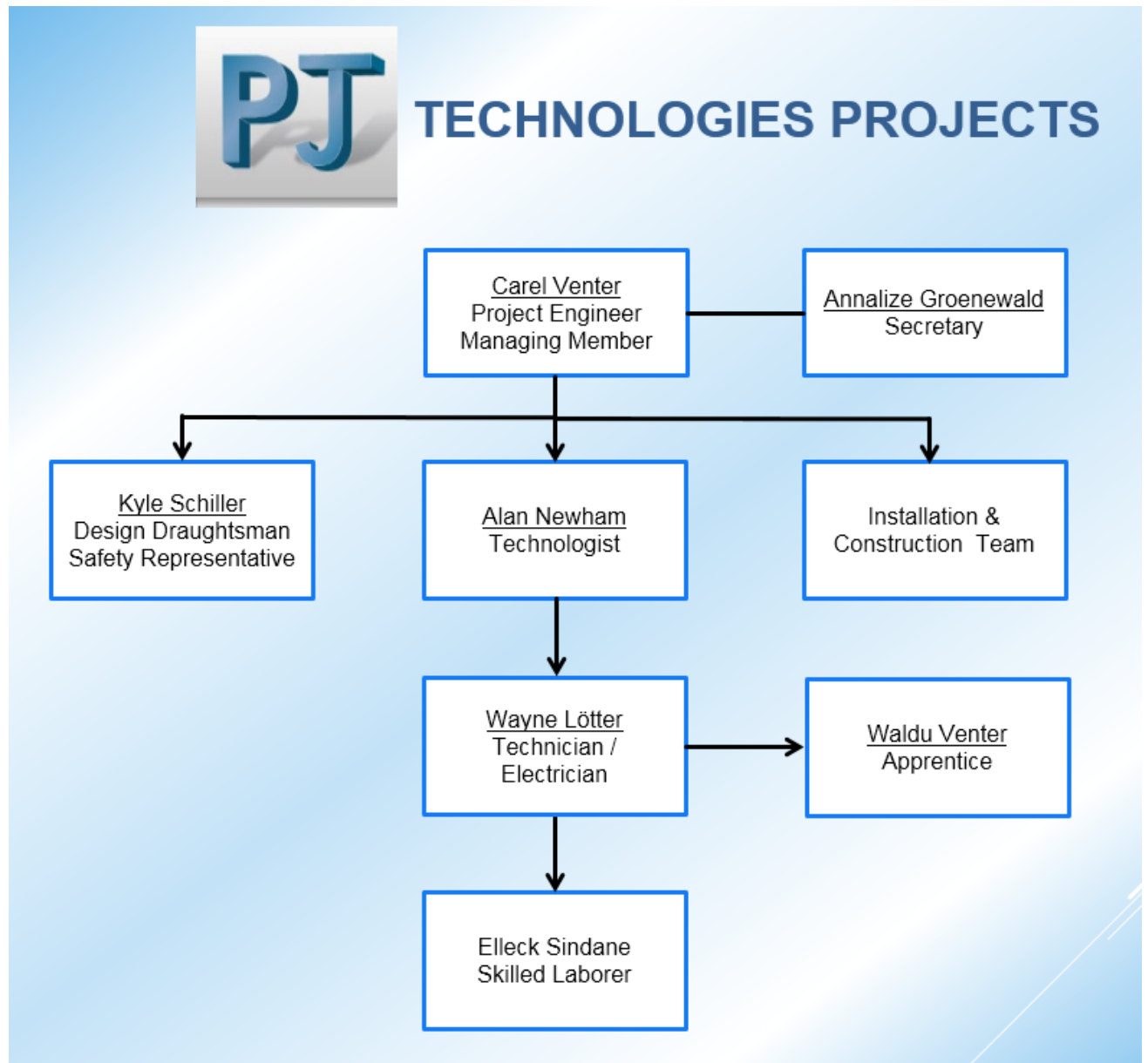
Date : 28 September 2015
Reference no :
Revision : 4
Author : Carel Venter

Index

Section 1	Principle Engineering Staff
Section 2	Company Details
Section 3	Company History
Section 4	Company Clients - Reference List
Section 5	Company Policy Statement
Section 6	Company BBEEE and CIDB

Section 1:

Principal Engineering Staff



Section 2: Company Details

Company Name: PJ Technologies Projects cc

Company Registration Number: CK-2010/144353/23

Company Address: Unit 5, Gate 1
Close By Business Estate
423 Dewar st,
Derdepoort

Company Postal Address: P O Box 915-960
Faerie Glen
Pretoria
0043

Company Contact Details: (T) 012 819 1116
(F) 086 606 0226
Web: www.pjt.co.za

Carel Venter: (C) 082 455 6825
carel@pjt.co.za

Alan Newham: (C) 072 391 4677
alan@pjt.co.za

Wayne Lötter: (C) 071 492 5877
wayne@pjt.co.za

Kyle Schiller: (C) 082 631 0745
kyle@pjt.co.za

Section 3: Company History

PJ Technologies cc was founded in 1989 as a Specialised Electrical Consultancy.

The company has, over the 22 years of its existence, gained an enviable reputation in the electrical power distribution field, particularly in the areas of troubleshooting, power system analysis, protection, metering, power factor correction and emergency generation. PJ Technologies has by choice, remained small and flexible, concentrating its efforts in these areas from offices in Pretoria (PJ Technologies cc), and Cape Town (PJ Technologies Cape cc).

In recent years PJ Technologies, through their technical expertise, have increasingly been requested to do specialist repair, maintenance, modification and construction of metering, switchgear, protection and power factor correction installations. The demand for these services has escalated to such a degree that we now have dedicated teams for this purpose.

In order to provide more focused services, we have decided to separate our theoretical and practical disciplines by servicing maintenance and construction activities from a dedicated company. This company, which is active from November, 2010, is called PJ Technologies Projects cc.

We are now active in the following:

1. Turnkey PFC Installations – 3.3 kV up to 132 kV
2. Optimization
3. Protection and Control
4. Breakdowns
5. Fault finding on Electrical Systems
6. Maintenance and Servicing of Power Factor Banks
7. Upgrading of Power Factor Banks
8. Trouble shooting of MV electrical equipment, e.g. Circuit Breakers, Control Equipment etc.
9. Project Management

Section 4: Company Clients and Reference List

The following reference list is a selection of Reactive Power Compensation, Sub Station Construction and Active Energy Management Projects and Maintenance managed by PJ Technologies Projects.

Not mentioned in this list are Consulting Services, General Maintenance and Repairs, Moving and Upgrades, and loose component supply.

Our Customers include:

ABB South Africa – RPC Group	First National Bank
De Beers Group	Petra Diamond Company – Cullinan
ESKOM Distribution – Western Cape	ESKOM Distribution – Eastern Cape
ESKOM Distribution – Kwazulu Natal	ESKOM Transmission – Kwazulu Natal
Debswana Diamond Company	ABB Botswana
Xstrata Chrome	BHP Billiton
Anglo Platinum	Anglo Coal
Anglo Gold	Samancor Alloys
Vametco Alloys - Brits	Afrox
Barrick Gold Mining Company – Tanzania	BMW South Africa
Minopex Platinum – Kroondal	Namzinc – Scorpion Mine
Exxaro – Tshikondeni	Highveld Steel
Ergo Mining Company	Nestle
Sibanye Gold	Impala Platinum
BCL Mine - Botswana	Rand Water Board
EHL	PG Bison
Exxaro - Grootegeeluk	BMW

Our detailed reference list can be viewed on our Website at:

www.pjt.co.za

Section 5: **Policy Statement**

Introduction

The purpose of this Policy Statement is to state the formalised techniques to ensure the physical safety, health and well being of our employees and employers through the responsible and ethical utilisation of our resources.

Commitment

The Managing Members and Senior Staff of PJ Technologies Projects acknowledge their responsibility, and accept accountability for providing, as far as it is reasonably practical, a risk free business and operating environment.

To achieve this working environment:

- Provide systems that are safe and without health risks
- Establish pro-active Risk Assessments in accordance with OHS Act to:
 - Identify Hazards
 - Eliminate hazards
 - Ensure that precautionary measures are in place
- Provide training to supervisors and staff,
- Inform employees of their role in SHE

People

PJ Technologies Projects regards people as its primary concern and to this end undertakes to safeguard employees and the public from injury or risk to health arising out of the operations associated with its business.

All employees within their own sphere of operation have a responsibility to identify existing or potential sources of injury, damage, loss, health or environmental threat, to eliminate or minimise these and to bring them to the attention of the health and safety representatives or their supervisors, and to be partners actively participating in enhancing safety and health.

Structure

This policy is reviewed at regular intervals, and specifically before the commencement of any project in order to accommodate improvements and specific requirements of client SHE requirements.

Hazard and Risk Assessment

Mine Health and Safety Act, Act no 29 of 1996, Chapter 2, Section 11 requires that Risk Assessments be conducted. The Safety in Mines Research Advisory Committee (SIMRAC) recommends that issue based assessments need to be instituted or modified because of, for example the following occurrences:

- ☞ The potential for accidents, incidents or dangerous occurrences;
- ☞ New, and / or changes to, designs, layouts, equipment, or processes, etc.
- ☞ Findings that come to the fore during continuous risk assessments;
- ☞ Requests from employees, regulators or members of affected stakeholder parties;
- ☞ A change in the baseline risk profile; and
- ☞ New knowledge and information on the level of risk to employees.

Investigation and Reporting

All accidents, events and non-conformance which had the potential to harm people, interfere with or disrupt the reaching of objectives will be recorded, reported and investigated.

Communication

To ensure a culture of commitment and participation to an effective SHE and OHS policy, the exchange of information in an open and transparent manner is seen as critical.

This communication shall include but not be limited to:

- Detailed feedback on progress, findings and recommendations of any investigations
- Participation in safety committees
- Participation in risk assessments
- Toolbox talks

Site Safety

To ensure a culture of commitment and participation to a safe working environment various measures are implemented.

The measures shall include requirements for, but not be limited to:

- Site specific safety induction
- Project/Task specific risk assessment (Toolbox Talks)
- Permits and supervision
- Protective Equipment (PPE) as required for the specific site requirements
- First Aid
- Fire Prevention
- Ladders and scaffolds – safety for working at heights
- Confined spaces
- Equipment operation
- Live electrical work
- Tools
- Security
- Immediate working environment

Section 6: Company BBEEE and CIDB

BBEEE:

Our current BBEEE Status is a Level 2.

Our BBEEE Certificate can be downloaded on our Website at:

www.pjt.co.za

CIDB: - Construction Industry Development Board

The Register of Contractors grades and categorises contractors according to financial and works capability. It is mandatory for public sector clients to apply the Register of Contractors when considering construction works tenders. The Register of Contractors facilitates public sector procurement and serves as a framework for contractor development.

The Register of Projects gathers information on the nature, value and distribution of projects. When clients register projects, the track records of contractors are updated and the information is available to other clients through the cidb website. Public sector clients are required to register projects above R200,000 while private sector clients and large state owned entities are required to register projects above R10 million.

We have qualified for the 6EP rating, with the following:

Works Capability *

Largest contract completed, during the 5 years immediately preceding the application, in the class of construction works applied for R 8 290 000.00

And

Maximum Value of a Contract that a Contractor is considered capable of performing R 13,000,000.00

Our CIDB Certificate can be downloaded on our Website at:

www.pjt.co.za